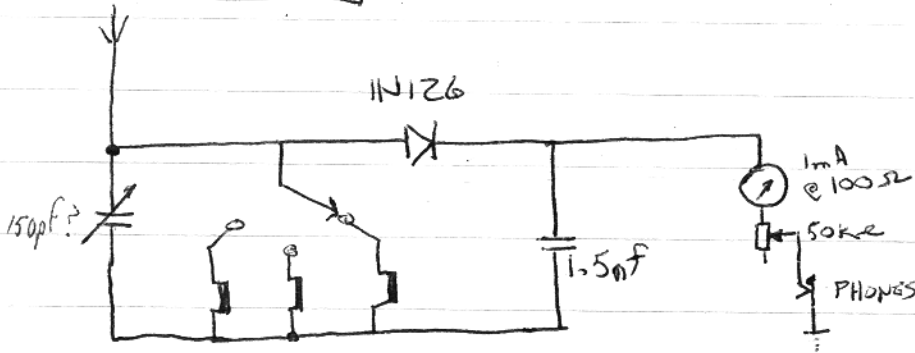


# FIELD STRENGTH METER

March 21, 1984

**OLD**

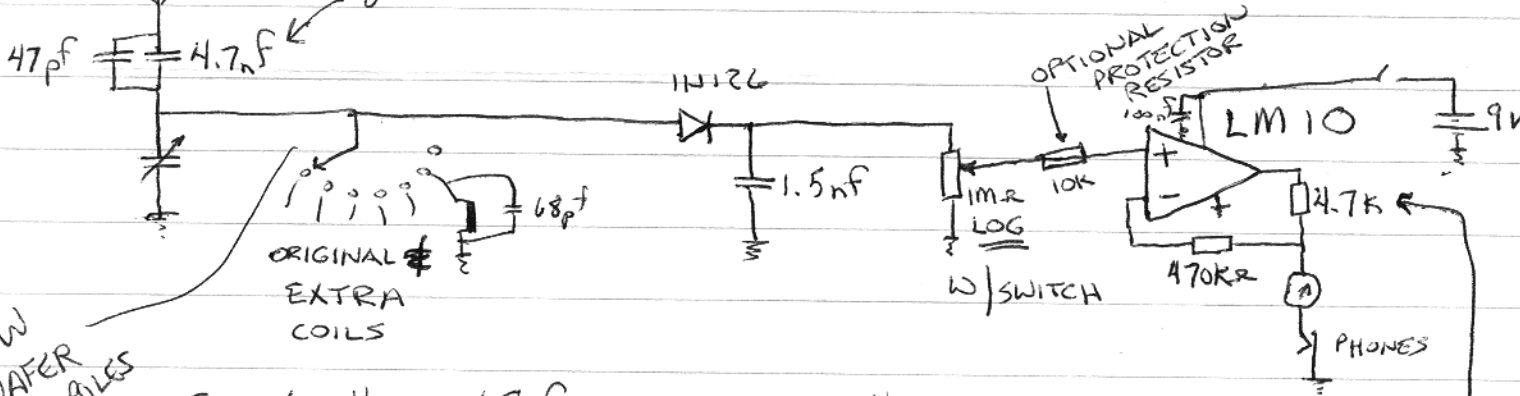


UNUSED COILS  
SHORTED TO GROUND

VERY LITTLE  
DEFLECTION  
1' FROM 1kV.

**NEW**

DC AND LOW FREQ (60Hz) AC PROTECTION

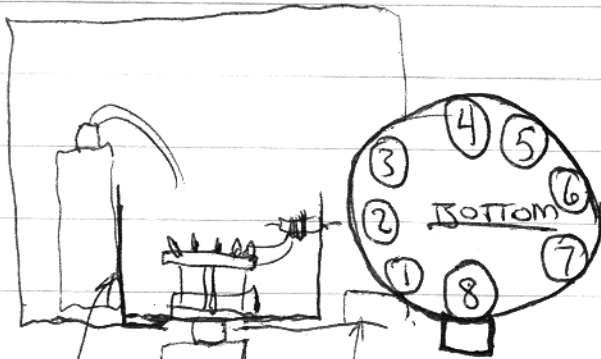
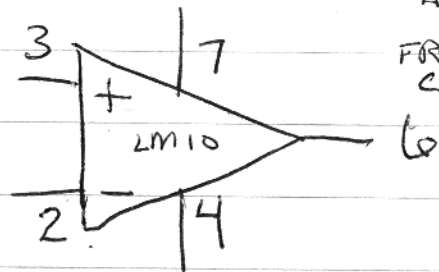


$$5 \text{ TO } 6 \text{ mH} + 68 \text{ pF} = 160 - 230 \text{ kHz}$$

PROTECTS

METER, BAT,  
AND OP AMP

FROM TOO MUCH  
CURRENT



ADD  
BATTERY  
BRACKET

SWITCH

meter JUST LIKE A  
TUBE.

PEGS METER W/ ZW TX  
2 BLOCKS AWAY.