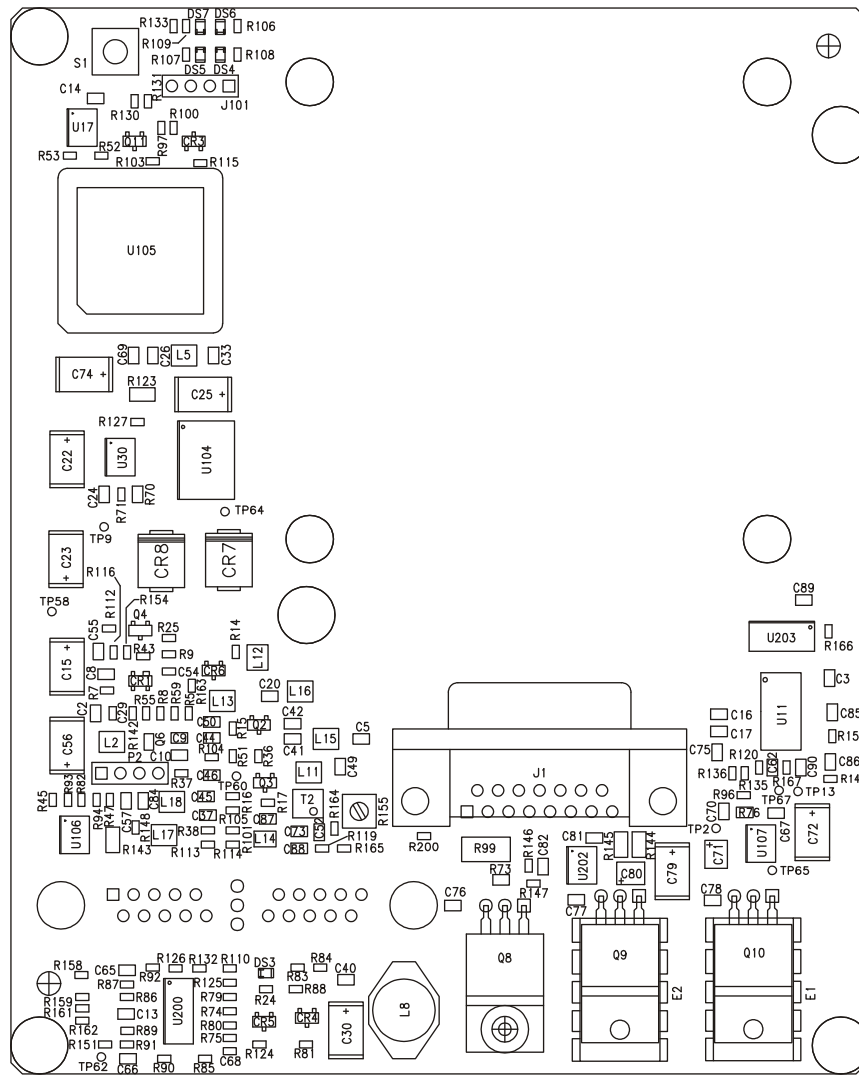


STM	REVISIONS	APPROVED	DATE
A	AS ISSUED	ERIC INGMAN	02/03/97
B	PCO 02-23037	LANDA LUONG	05/21/97



E1938-20007 REV C COMPONENT LOCATOR TOPSIDE 05/21/97

HP PROPRIETARY  
THIS DOCUMENT CONTAINS CONFIDENTIAL,  
PROPRIETARY INFORMATION THAT IS  
HEWLETT-PACKARD (HP) PROPERTY.  
DO NOT DISCLOSE TO OR DUPLICATE FOR  
OTHERS EXCEPT AS AUTHORIZED BY HP.

UNLESS OTHERWISE SPECIFIED,  
DIMENSIONS ARE IN INCHES.  
TOLERANCES: xx.xxx .010  
                  xx.xx .02  
THIRD ANGLE  
PROJECTION

RICK SILVEIRA  
DRAWN BY  
ERIC INGMAN  
ENGINEER/CHECKER  
BOB PECK  
RELEASE TO PROD.  
DATE  
05/21/97  
DATE  
05/21/97  
SUPERSEDES DRG.

COMPONENT LOCATOR  
TOPSIDE  
OSCILLATOR  
CONTROLLER

FILENAME  
SCALE NONE  
SHEET 1 of 1 PART NUMBER  
E1938-20007  
D-E1938-60008-21



TITLE