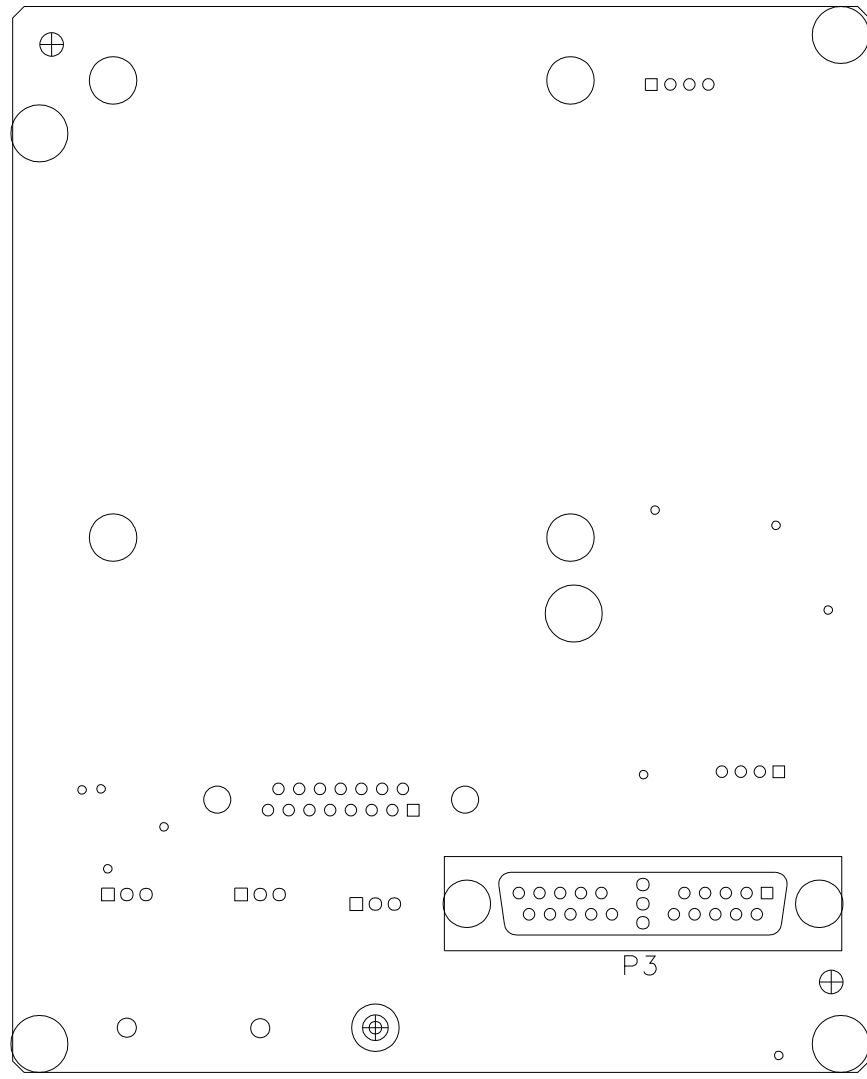


STM	REVISIONS	APPROVED	DATE
A	AS ISSUED	ERIC INGMAN	02/10/97
B	PCO 02-23037	LANDA LUONG	05/21/97



E 1938-20007 REV C COMPONENT LOCATOR BOTTOMSIDE 05/21/97

HP PROPRIETARY
 THIS DOCUMENT CONTAINS CONFIDENTIAL,
 PROPRIETARY INFORMATION THAT IS
 HEWLETT-PACKARD (HP) PROPERTY.
 DO NOT DISCLOSE TO OR DUPLICATE FOR
 OTHERS EXCEPT AS AUTHORIZED BY HP.

UNLESS OTHERWISE SPECIFIED,
 DIMENSIONS ARE IN INCHES.
 TOLERANCES: xx.xxx .010
 xx.xx .02
 THIRD ANGLE PROJECTION

RICK SILVEIRA 05/21/97
 DRAWN BY DATE
 ERIC INGMAN 05/21/97
 ENGINEER/CHECKER DATE
 BOB PECK 05/21/97
 RELEASE TO PROD. DATE
 SUPERSEDES DBG.

COMPONENT LOCATOR
 BOTTOMSIDE
 OSCILLATOR
 CONTROLLER

FILENAME
 SCALE NONE
 SHEET 1 OF 1 PART NUMBER
 E 1938-20007
 D-E 1938-60008-22



TITLE